

12 MM BORE STAINLESS STEEL METRIC CYLINDER



M-SDR-08-□-□

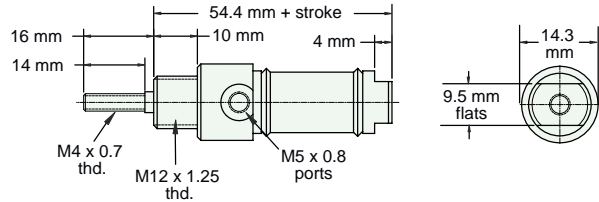
Double Acting

NEW!



Mount: Stud
Type: Rotating Rod
Options: B, V

Standard Stroke Lengths: 10 mm, 25 mm, 40 mm, 50 mm, 80 mm, 100 mm, 125 mm, 160 mm



Nut included, but not shown on drawing

M-UDR-08-□-□

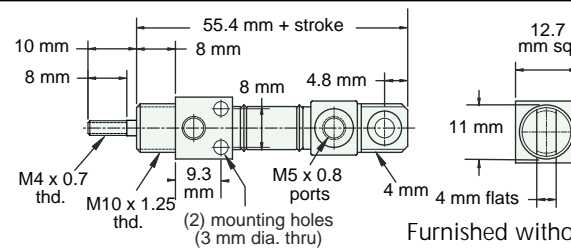
Double Acting

NEW!



Mount: Universal
Type: Rotating Rod
Options: B, V

Standard Stroke Lengths: 10 mm, 25 mm, 40 mm, 50 mm, 80 mm, 100 mm, 125 mm, 160 mm



Furnished without nut(s). Order Part No. NM10-125.

M-SSR-08-□-□

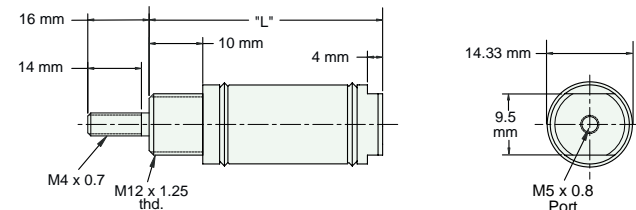
Single Acting

NEW!



Mount: Stud
Type: Rotating Rod
Options: B, V

Standard Stroke Lengths: 10 mm, 25 mm, 40 mm, 50 mm, 80 mm, 100 mm



Nut included, but not shown on drawing

"L" (mm) for Standard Strokes						
Stroke	10	25	40	50	80	100
	56	83	120	130	193	224

M-USR-08-□-□

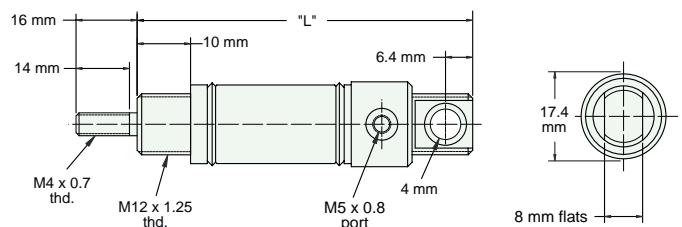
Single Acting

NEW!



Mount: Universal
Type: Rotating Rod
Options: B, V

Standard Stroke Lengths: 10 mm, 25 mm, 40 mm, 50 mm, 80 mm, 100 mm



Furnished without nut(s). Order Part No. NM10-125.

"L" (mm) for Standard Strokes						
Stroke	10	25	40	50	80	100
	73	100	137	141	210	241